



CF-188 'HORNET'

1:48 FIP MARKINGS

COPYRIGHT (C) 2012 - 2013 DAVID A. WINTER

ALWAYS CHECK YOUR REFERENCES!
MARKINGS CHANGE SLIGHTLY FROM AIRFRAME TO AIRFRAME AND FROM YEAR TO YEAR.

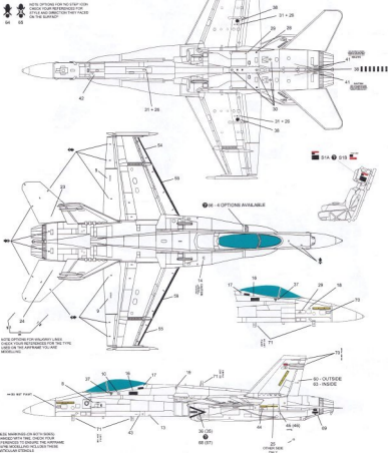


NOTE: OPTIONS FOR NO STEP-UP OVER CHECK YOUR REFERENCES FOR STYLE AND DIRECTION THEY FACE ON THE SURFACE!

MAINTENANCE MARKINGS

PAINT AND NATIONAL MARKINGS OMITTED FOR CLARITY

MARKINGS HERE ARE IN GRAY IN BLACK FOR CLARITY
TYPICALLY ALL MARKINGS ARE THE REVERSE OF THE GRAY THEY'RE PLACED ON.



AETE TYPE A

THE SHADOW IS TOWARDS THE REAR OF THE AIRCRAFT.

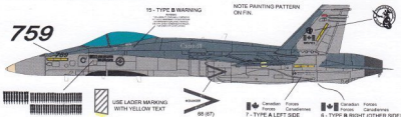


AETE TYPE B

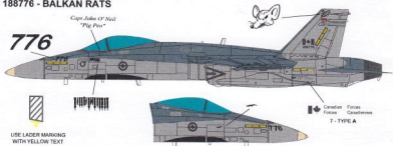
CREST LOCATION BOTH SIDES.



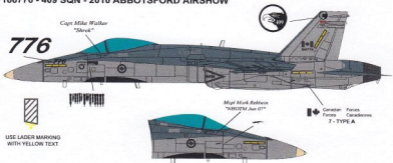
188759 - OPERATION MOBILE



188776 - BALKAN RATS



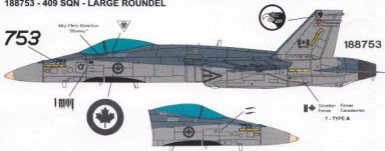
188776 - 409 SQN - 2010 ABBOTSFORD AIRSHOW



OPERATION & OTHER MARKINGS

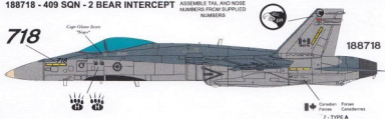
WARNING AND MAINTENANCE MARKINGS OMITTED FOR CLARITY

188753 - 409 SQN - LARGE ROUND EL



188718 - 409 SQN - 2 BEAR INTERCEPT

ASSEMBLE TAIL AND NOSE NUMBERS FROM SUPPLIED NUMBERS

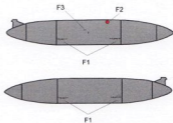


FUEL TANKS AND LANDING GEAR

NOTE: CF-18 MAIN LANDING GEAR SHOCKS HAVE THE CHROME SHAFT ON THE BOTTOM OF THE ASSEMBLY. THIS PART NEEDS TO BE MODIFIED ON THE ACADEMY KIT.



L4 - TOP OF TOW BAR
L3 - BOTTOM OF TOW BAR



COPYRIGHT (C) 2012 - 2013 DAVID A. WINTER



409 SQUADRON
TYPICAL CREST PLACEMENT SHOWN.



410 SQUADRON
TYPICAL CREST PLACEMENT SHOWN.



416 SQUADRON
TYPICAL CREST PLACEMENT SHOWN.



421 SQUADRON
TYPICAL CREST PLACEMENT SHOWN.



425 SQUADRON
TYPICAL CREST PLACEMENT SHOWN.
THE SQUADRON CREST HAS BEEN NOTED IN TWO
DIFFERENT DESIGNS.



CHECK REFERENCES FOR YOUR PARTICULAR AIRCRAFT.



433 SQUADRON
TYPICAL CREST PLACEMENT SHOWN.
THE SQUADRON CREST HAS BEEN NOTED IN TWO
DIFFERENT DESIGNS. NOTE TEXT ON FIN CAP.



CHECK REFERENCES FOR YOUR PARTICULAR AIRCRAFT.



439 SQUADRON
TYPICAL CREST PLACEMENT SHOWN.



441 SQUADRON
TYPICAL CREST PLACEMENT SHOWN.

REAR OF DECAL SHOULD BE TRIMMED TO FIT YOUR KIT
TAIL PARTS.

INCLUDES

- EARLY AND CURRENT FIP ERA MARKINGS FOR RCAF CF-188 AIRCRAFT
- TAIL CREST MARKINGS FOR 409, 410, 416, 421, 425, 433, 439, 441 SQUADRONS
- 2 VARIATIONS OF AETE MARKINGS
- OP MOBILE AND BALKAN RATS BADGES
- VARIOUS MAINTENANCE AND WARNING MARKS
- FALSE CANOPY DECALS
- SLIM LIGHT DECALS

SOURCES AND MODELLERS REFERENCES

- *CANADIAN MILITARY AIRCRAFT FINISH AND MARKINGS 1968-2004* - PATRICK MARTIN
- *CANADA'S AIR FORCE TODAY* - LARRY MILBERRY
- *THE MODERN HORNET GUIDE* - JAKE MELAMPY AS A GENERAL CF-18 REFERENCE
- DAVID A. WINTER PHOTO COLLECTION
- GOOGLE IMAGES

Special thank you for the enormous amount of reference material and feedback provided by;

- Richard Girouard.
- Dan McWilliams.
- Gary Fairful.
- Emil Varosi.
- Sean Martin.
- Uncle Rick Chin for Balkan Rats crest and other reference photos.
- Derek Hayes of Hazers Flightline (<http://hazersflightline.com/>) for providing permission to use his reference photos for OP MOBILE markings as well as others.

Also Available:

CF-188 Symmetrical Markings.

CP-140 FIP Markings.

CF-101 RCAF+3 Markings.

www.canuckmodels.com

Find us on
 [facebook/canuckmodels](https://www.facebook.com/canuckmodels)



All decal graphics were created from references cited above. Decal design and layout is copyright (C) 2013 David A. Winter and Canuck Model Products. Canada Wordmark, DND signature, RCAF Roundel, and other original graphics are copyright of the Canadian Department of National Defence and are used by permission of the Department of Intellectual Properties office.