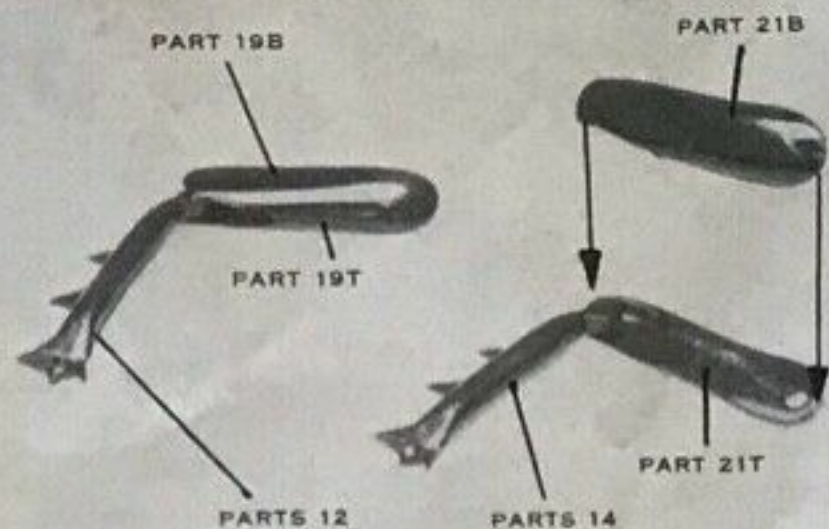
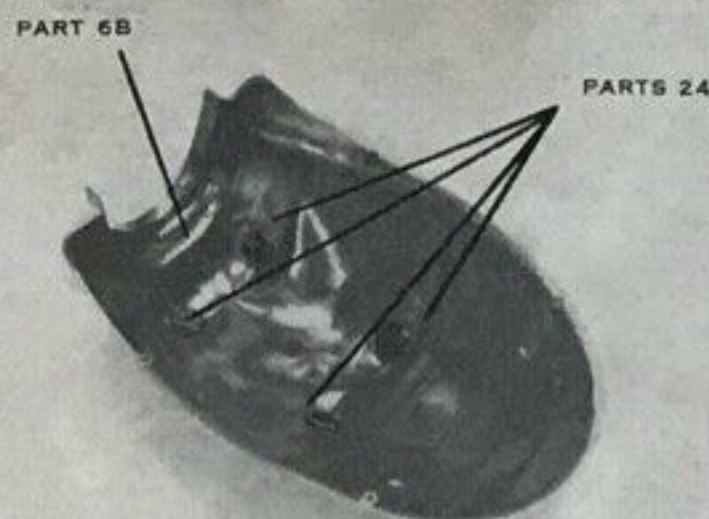


16



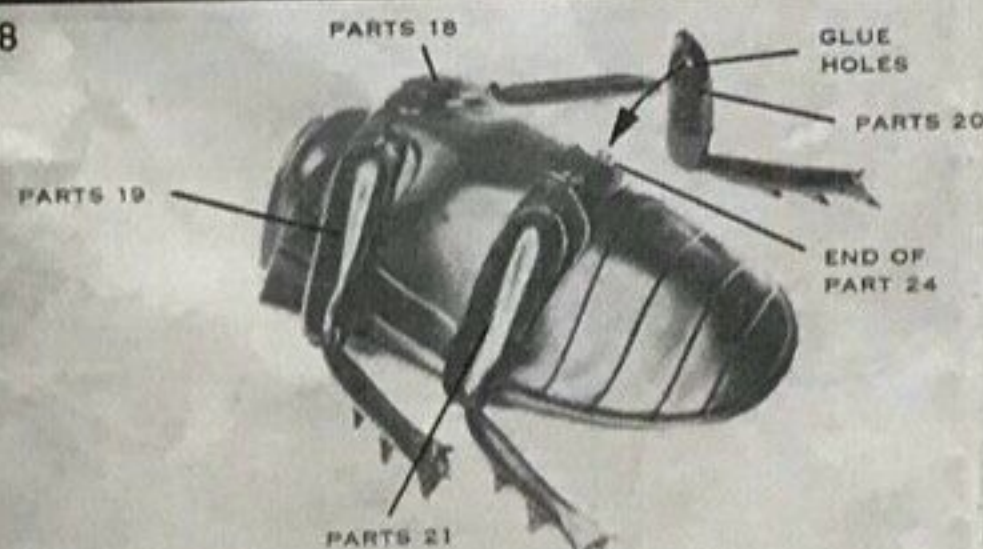
Place part 15 on the pivot pin of part 21T. Now glue part 21B to 21T. Assemble parts 13, 19B, and 19T in the same way. Mark the parts with your pencil.

17



Place parts 24 through the holes in part 6B. Do not glue.

18



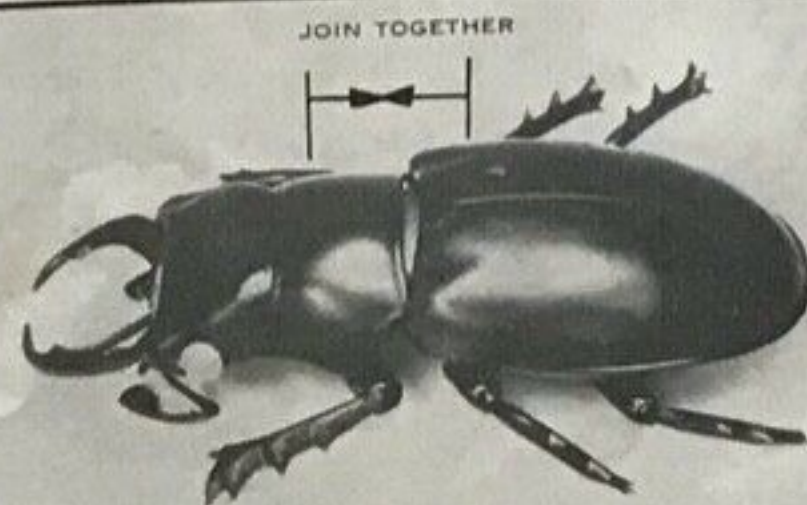
Place cement in the holes of the legs and attach them to the ends of parts 24 as shown. When these have dried you may rub the pencil markings off the legs.

19



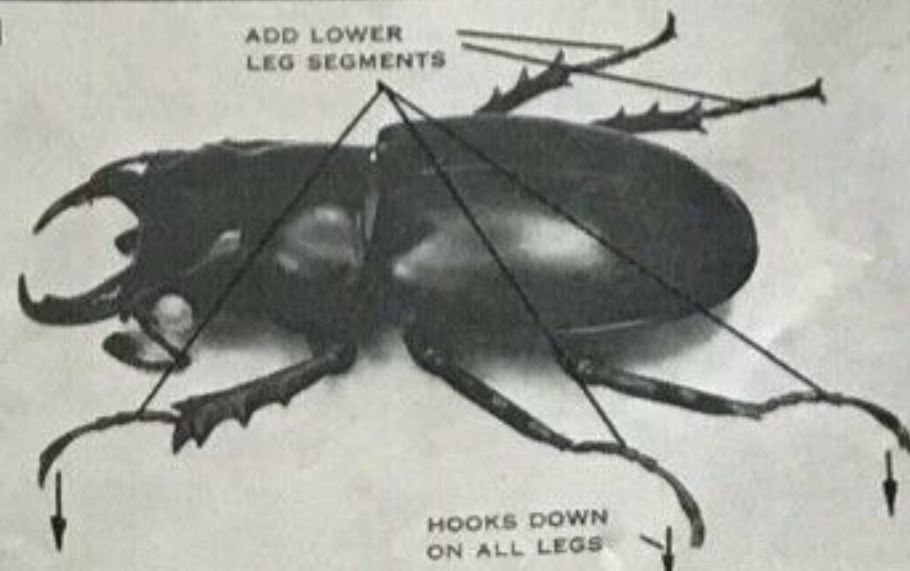
Glue part 6T into position as shown.

20



Join the head and rear units together as shown.

21



Now glue the lower leg segments that you have built in Step 2 to the legs as shown. Note how the hooked portion of the legs face down. Do not handle your model until all the glue has dried thoroughly.



MODEL COMPANY
Chicago 31, Illinois

The STAG BEETLE

Pseudolucanus capreolus
(WE CALL HIM BERTRAM)
KIT No. 516-98

WHAT IT IS LIKE TO BE A BEETLE

A beetle's life is interesting and, for insects, quite long. A beetle begins as an egg. The egg is one of several hundred laid by the adult female. The beetle egg gradually changes to the larva. It is in the larva stage that the beetle spends most of its life. Several years, in fact, pass before the larva changes to the pupa.

The Stag Beetle larva feeds on wood. The wood is so badly damaged that it is of no commercial value after being attacked by beetle larvae. Before the larva changes to the pupa it builds a cell, or protective structure, around itself. It is here, in his cell, that the larva changes to pupa. The pupa stage in insect development is also referred to as "the resting stage." In the pupa the adult insect is developing. Growing, changing structure, until, in late spring or early summer, the adult beetle emerges.

The adult Stag Beetle is over an inch and a half long. Its color is very dark brown with some varieties being black. The male beetle has large mandibles protruding from its head. These mandibles resemble the antlers on stags, hence the name, Stag Beetle.

Male Stag Beetles are great fighters. Often, during a summer evening, you may see two Stag Beetles with their mandibles entwined, fighting for possession of a mate.

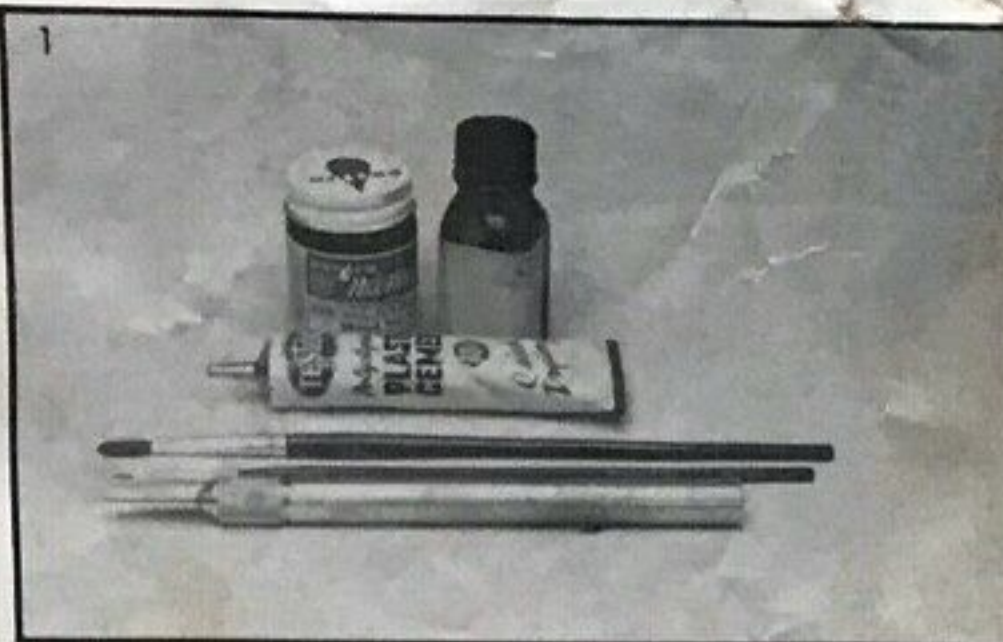
Stag Beetles can fly and they are attracted to light at night. Adult Stag Beetles are said to live on plant secretions and honey dew.

Because of the powerful mandibles the Stag Beetle is sometimes referred to as "the pinching bug." A powerful body, a long life, and interesting habits make the Stag Beetle a fascinating insect to study.

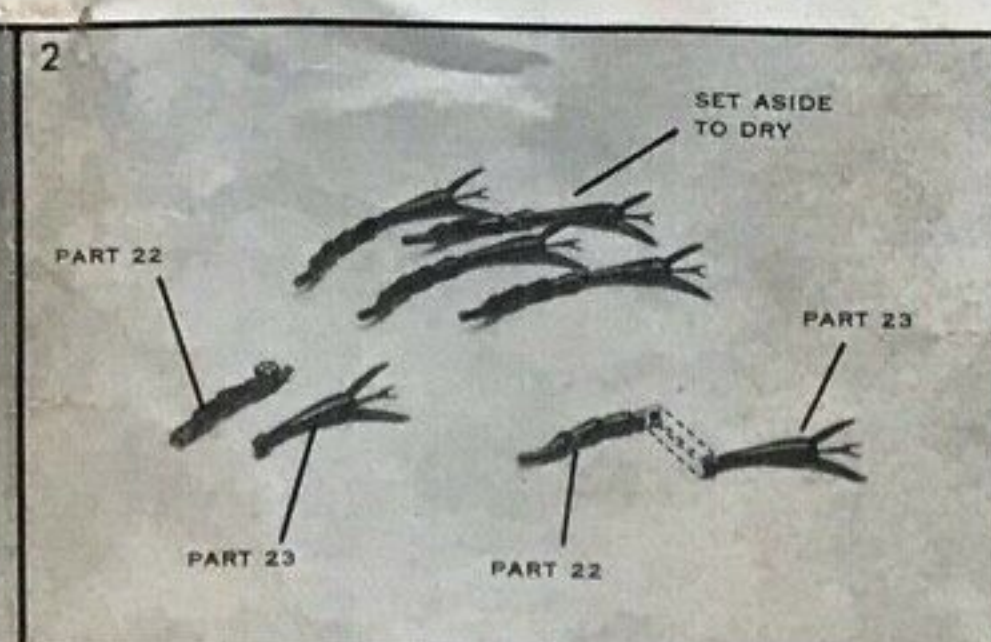
YOUR MODEL

Your completed model of the stag beetle is a highly accurate replica of the adult male beetle. The model is suitable for classroom study, special science projects, and as a unique display in your model collection. Take your time building this model and follow the instructions closely. Another insect kit available at your hobby dealer is Hawk's "Pancho" Grasshopper kit. This is kit number 151. We are sure you will want to add it to your collection.

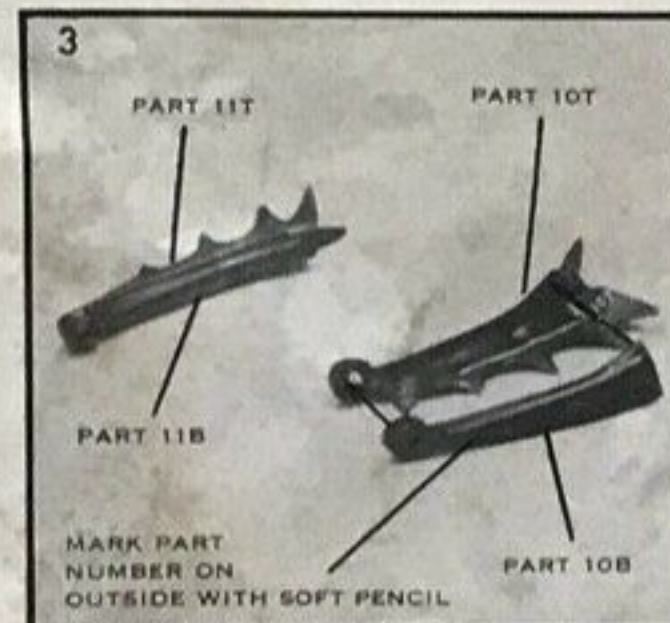




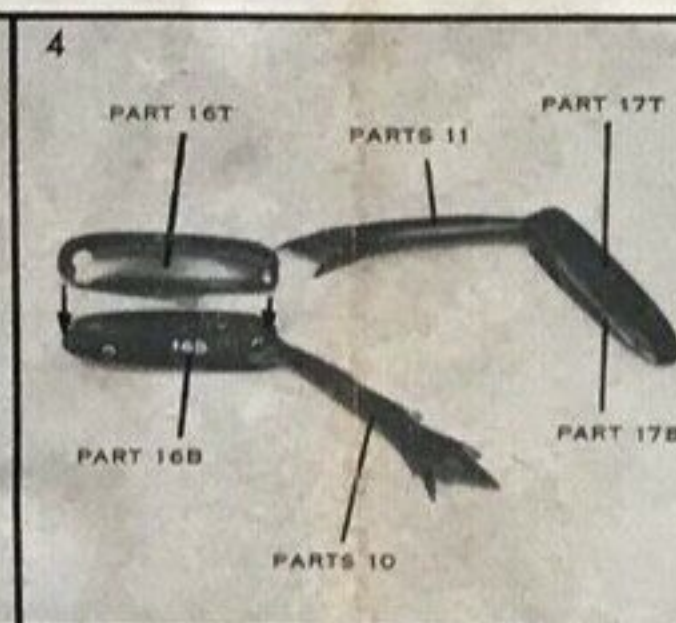
Shown above are tools and materials useful in building your model. An X-ACTO knife for trimming parts. Brushes for painting and applying cement. Tube or liquid plastic cement. Enamel plastic paint in a tan color.



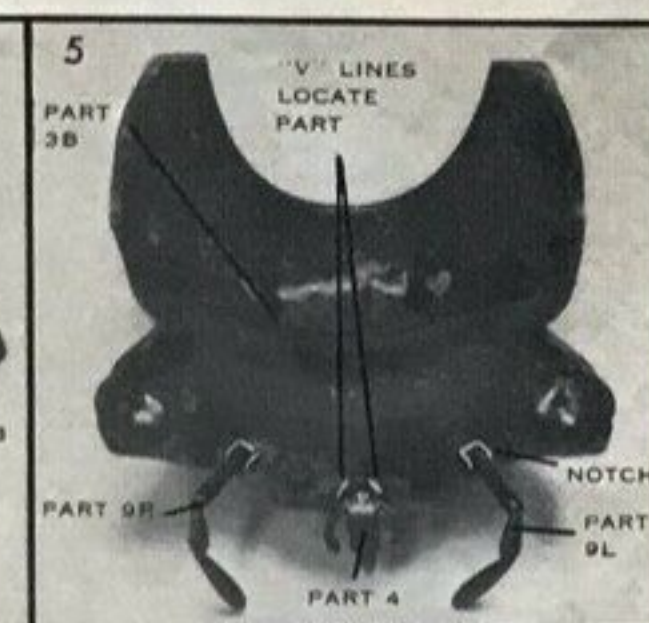
Cement all the parts 22 & 23 together as shown. Set these aside to dry thoroughly.



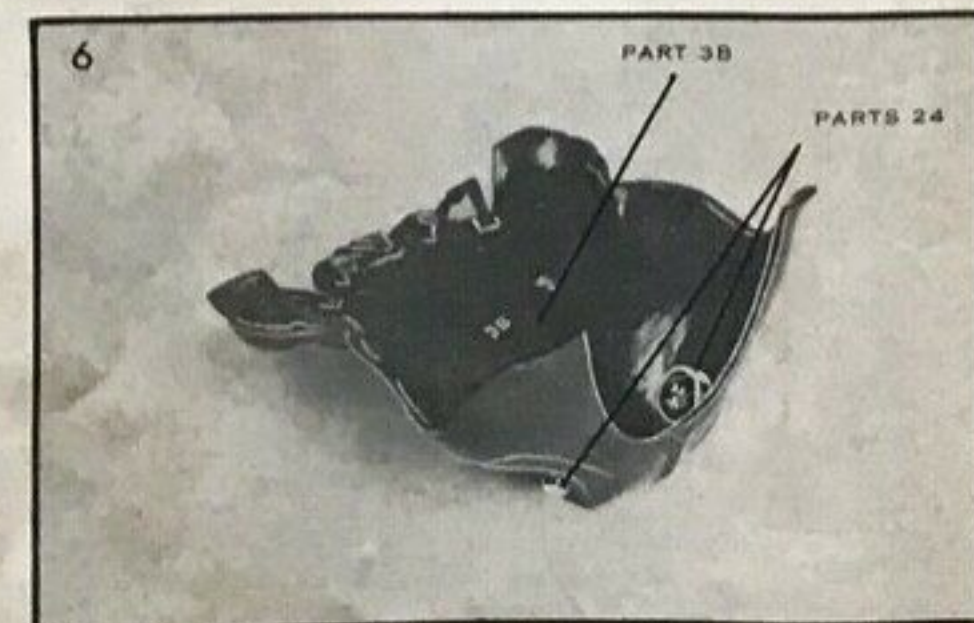
Glue part 10T and 10B together as shown. Do the same with 11T and 11B. Mark the part number on the outside of the pieces with soft pencil.



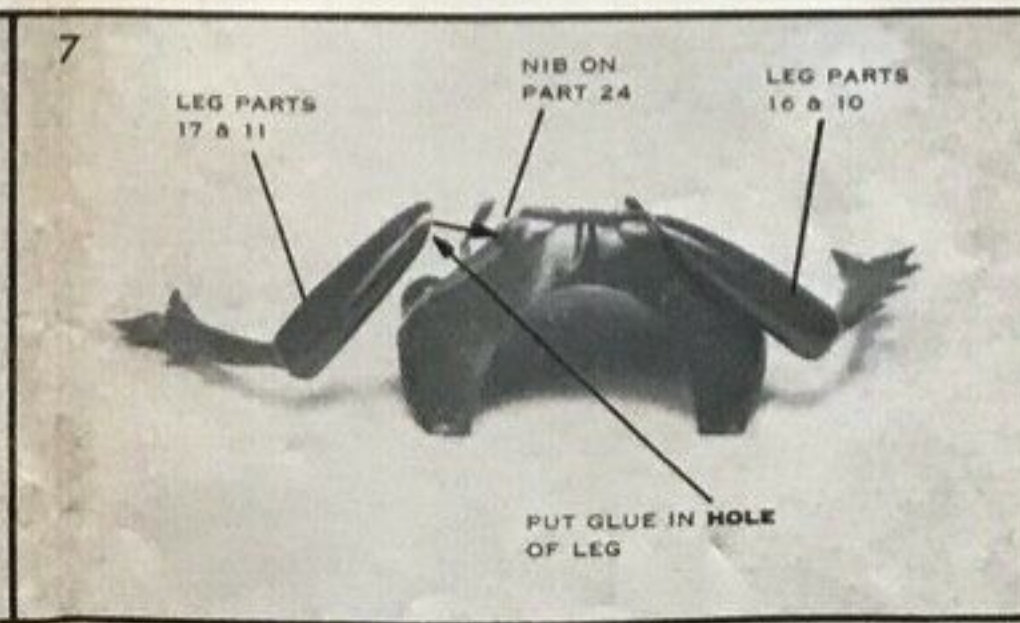
Place part 10 on the pivot pin of part 16B. Now cement 16T to 16B. Be careful not to use too much glue. Attach 11, 17T, and 17B, in the same way.



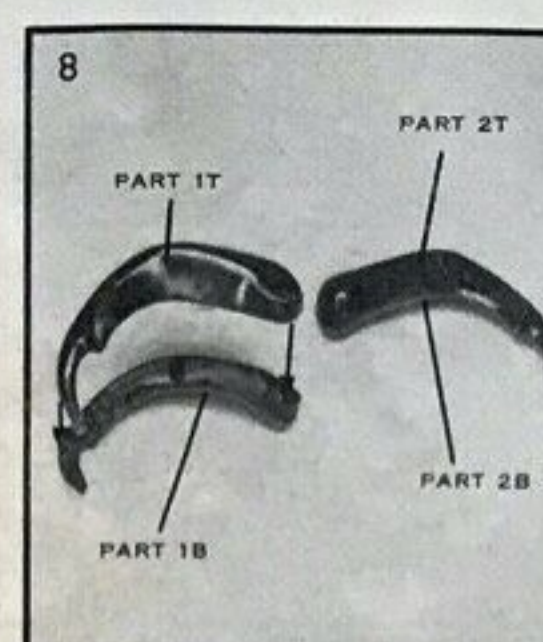
Glue part 4 between the "V" marks on the inside of part 3B. Now glue parts 9R and 9L into their notches in part 3B.



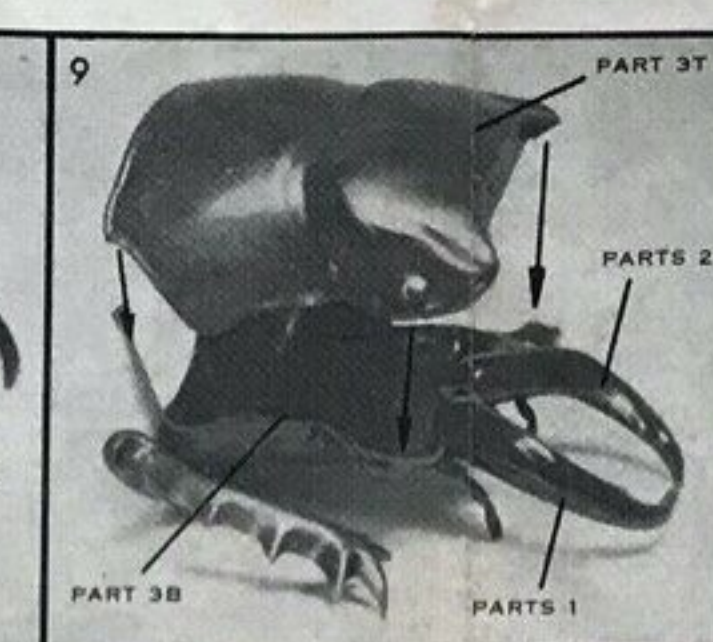
Place two of the parts 24 through the holes in part 3B as shown here. Do not cement.



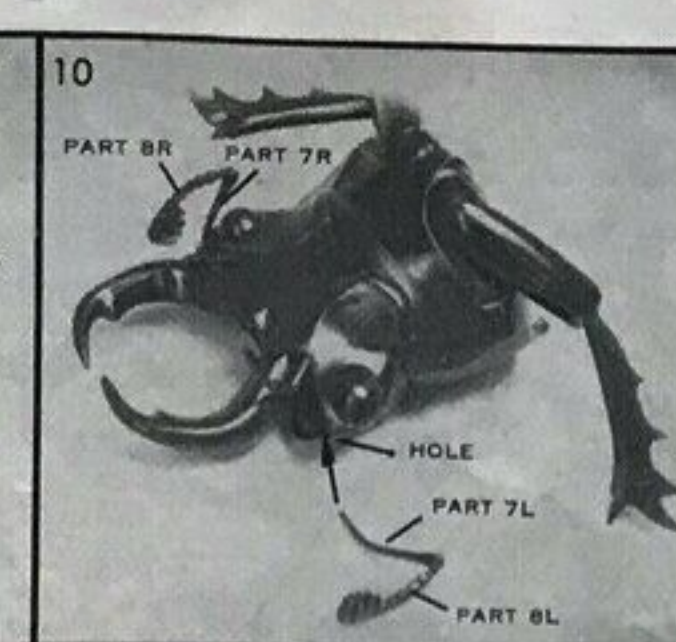
Place glue in the holes of the leg parts and attach them to the nib of part 24 as shown above.



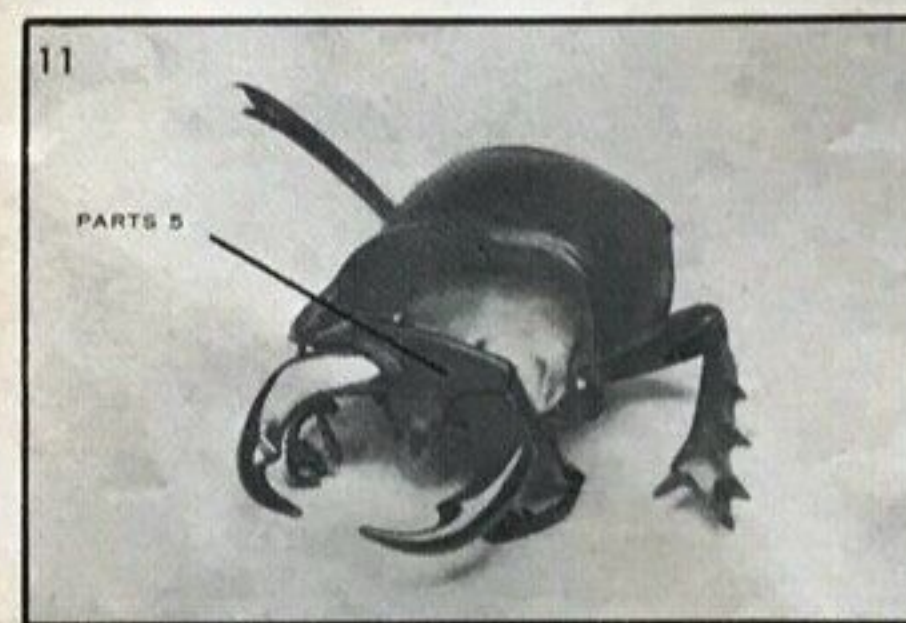
Glue parts 1B and 1T together as shown. Do the same for parts 2T and 2B.



Place parts 1 and 2 on the pivot pins of part 3B. Now cement part 3T to 3B.



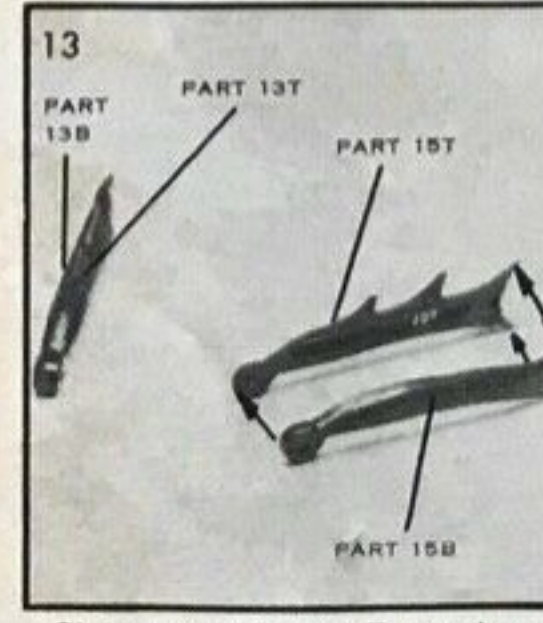
Glue parts 7L and 8L together as shown. Also assemble parts 7R and 8R as shown. Now glue these parts into their proper holes in part 3T as shown.



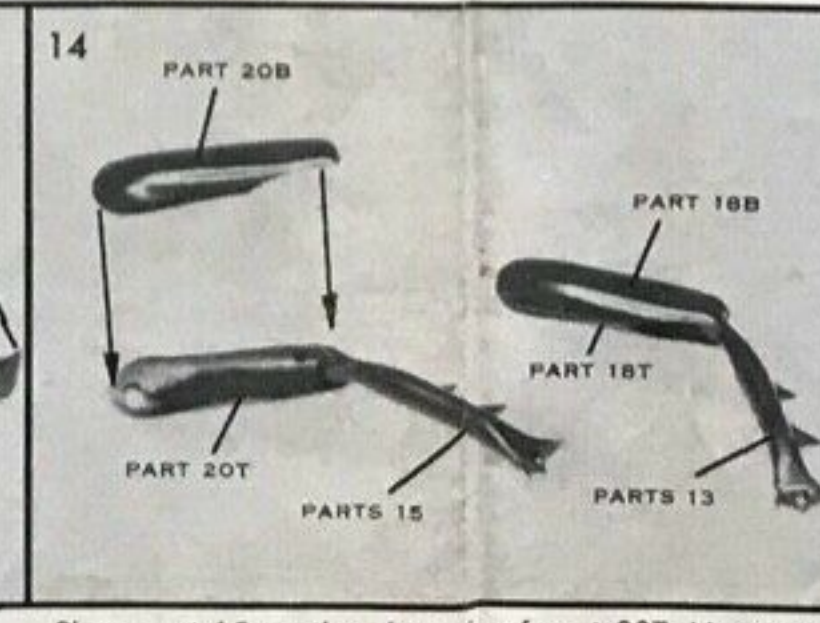
Cement part 5 to 3T as shown.



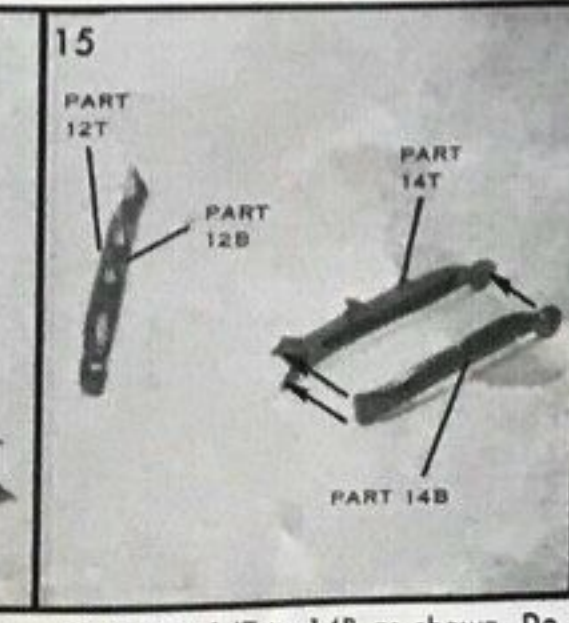
Paint the eyes of the beetle tan and set this head assembly aside to dry thoroughly.



Glue parts 15T and 15B together. Do the same with 13T and 13B. Mark with pencil.



Place part 15 on the pivot pin of part 20T. Now cement 20B to the unit. Assemble part 18B 18T, and 13 in a like manner. Mark parts with a pencil.



Glue part 14T to 14B as shown. Do the same with parts 12B and 12T as shown. Be sure to mark part numbers on the outside of the piece with a soft pencil.